

Osprey Restoration in Coastal Alabama

Phase IV Proposed Early Restoration Project

PROJECT DESCRIPTION

The proposed Osprey Restoration in Coastal Alabama project would establish five osprey nesting platforms along the coast in Mobile and Baldwin Counties, Alabama to provide enhanced nesting opportunities for fish-eating raptors, including osprey. The nesting sites are proposed to be located in the vicinities of Portersville Bay, Dauphin Island, Fort Morgan, Little Lagoon in Gulf Shores, and in Gulf State Park.

Osprey can be found in coastal Alabama year-round. Osprey require nest sites in open surroundings for easy approach, with wide, sturdy bases and safety from ground predators. Nests are usually built on snags, treetops, at the junction of large branches and trunks, on cliffs, or human-built platforms. Osprey readily builds their nests on manmade structures in suitable habitat areas, such as telephone poles, channel markers, duck blinds, and nest platforms designed especially for it. In some areas, osprey place their nests almost exclusively on artificial structures.

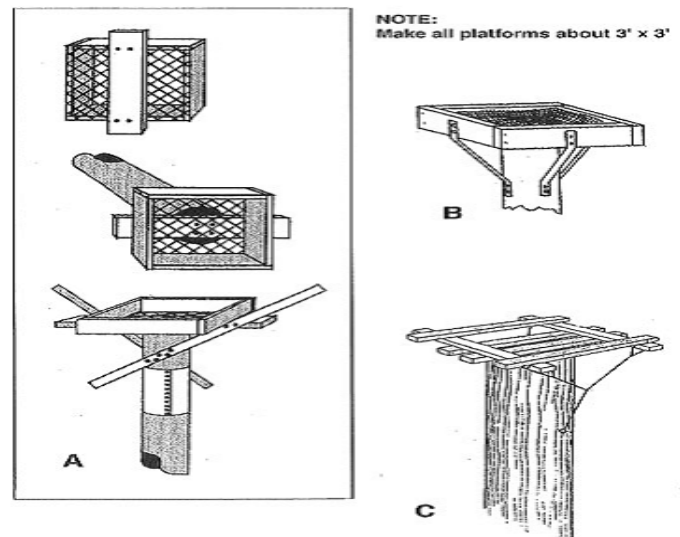
A typical design for these types of structures is a 3 foot by 3 foot nesting platform atop a pole approximately 10 to 20 feet high. Typically, poles would be placed 3 to 6 feet deep into the ground. Sheet metal would be attached approximately 3 to 6 feet above the ground to prevent predators, such as racoons, from accessing the nests.

As natural nesting sites, such as tree snags, are removed along developed coastlines, nesting platforms such as the structures proposed in this project provide important alternative nesting opportunities.

ESTIMATED COST: \$45,000



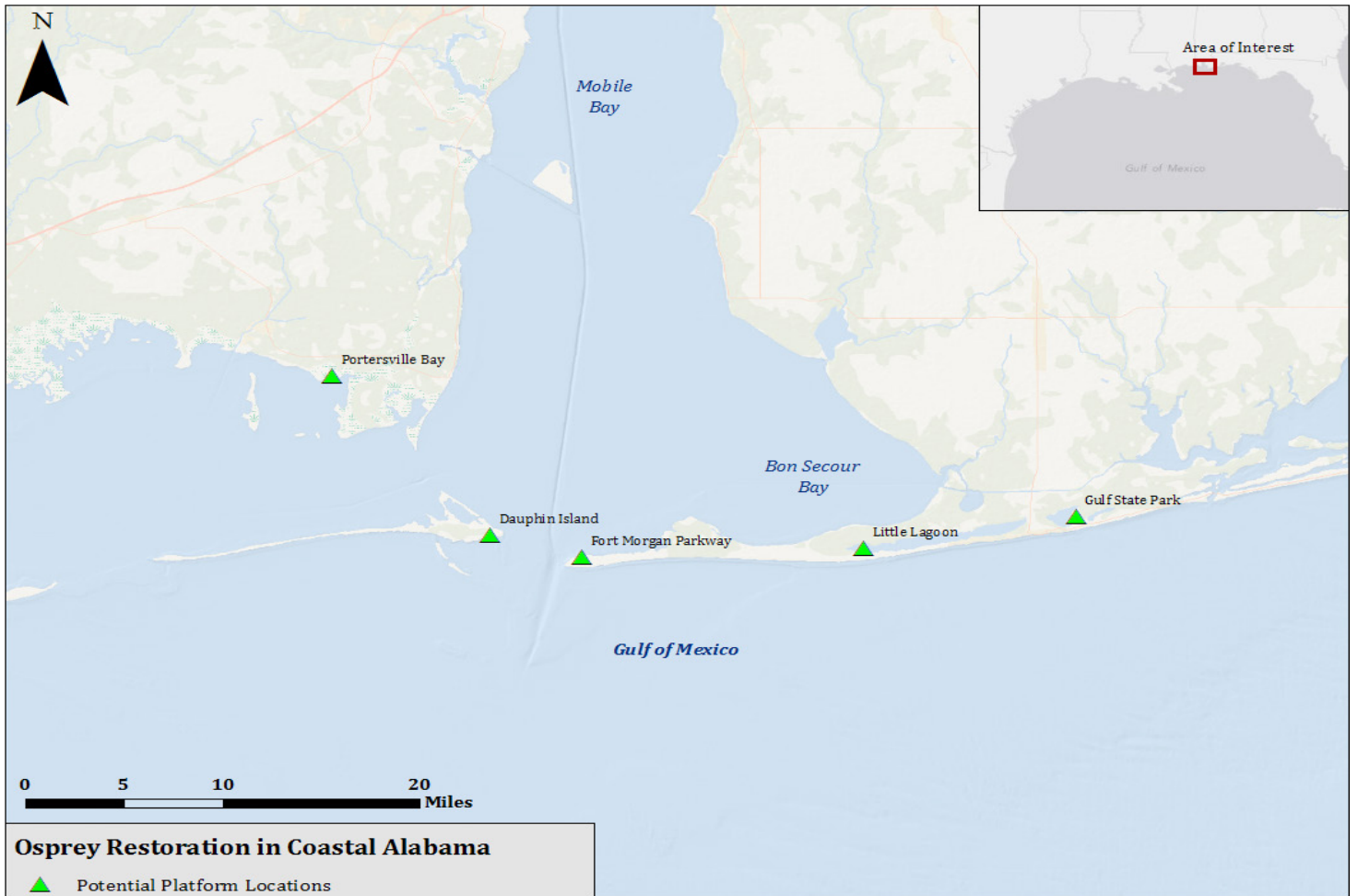
A typical osprey nesting platform.



A typical nesting platform design.

FOR MORE INFORMATION CONTACT

Patti Powell
Alabama Department of Conservation and Natural Resources
(334) 242-3284
patti.powell@dcnr.alabama.gov



Potential locations for osprey nesting platforms in Coastal Alabama.

