

Phase I Early Restoration Plan



April 2012

MISSISSIPPI OYSTER CULTCH RESTORATION

GENERAL PROJECT DESCRIPTION

For over a hundred years shell/cultch plants in Mississippi have proven to be successful in growing new and harvestable oysters in the Mississippi Sound. The goal of the Mississippi Oyster Cultch Restoration project is to restore and enhance oyster cultch within the existing footprint of the oyster harvest areas of the Mississippi Sound. Oyster cultch plant areas are routinely surveyed to identify potential enhancement and restoration opportunities.

This project will restore and enhance approximately 1,430 acres of the oyster cultch areas that cover approximately 12,000 acres of the Mississippi Sound. Cultch material (oyster shell, limestone or crushed concrete, or some combination thereof) would typically be deployed at a rate of 100 cubic yards per acre with adjustments for site conditions as needed. More than 140,000 cubic yards of material will be deployed for this project.

The project will be managed by the Mississippi Department of Environmental Quality and is estimated to begin in fall of 2012 in order to coincide with the spat season and natural life cycle.

RESOURCE BENEFITS

Mississippi's Oyster Cultch Restoration project will restore injured oyster reefs and/or compensate for interim losses of natural resources within the Mississippi Sound for impacts to oysters exposed to oil, dispersant, and/or response activities undertaken to prevent, minimize, or remediate oiling from the Oil Spill. Mississippi should begin to see harvestable production from the oysters within three to six years following placement of the cultch.

The project will provide additional oyster production in the western Mississippi Sound and will increase commercial oyster harvesting opportunities. Oyster cultch will enhance existing Mississippi oyster management efforts and result in an increase in harvestable oyster areas. In fact, the project development of oyster harvesting opportunities, resulting from successful project implementation, will provide greater economic and commercial resources for local citizens and local businesses due to the enhanced harvesting opportunities.

ESTIMATED COSTS

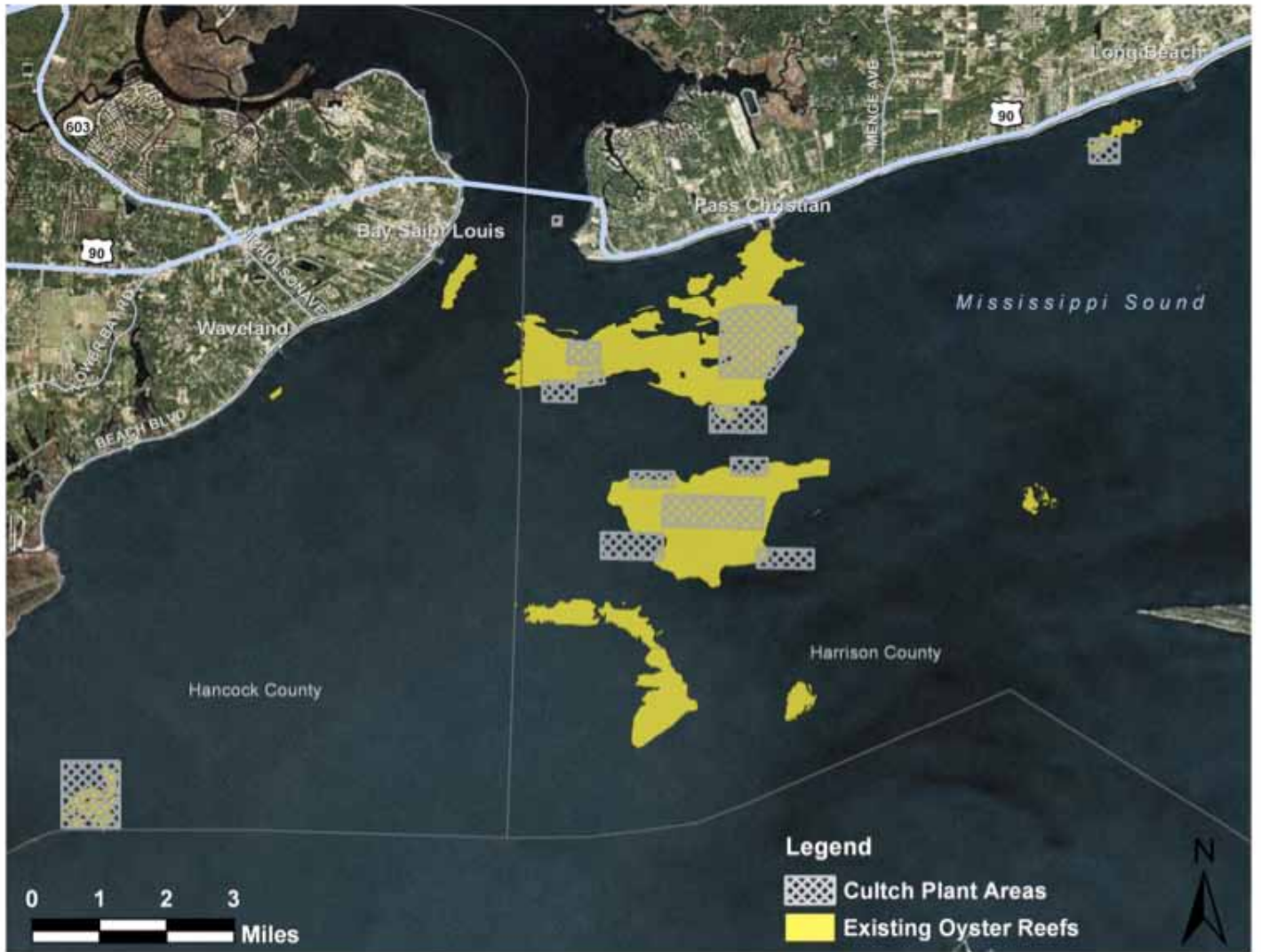
Total estimated project costs are \$11 million.

(Estimated costs for some of the projects were updated from those provided in the DERP/EA. Actual costs may differ depending on future contingencies, but will not exceed the amount shown without further agreement between the Trustees and BP.)

FOR MORE INFORMATION, CONTACT:

Richard Harrell, Mississippi Department of Environmental Quality
Email: Richard_Harrell@deq.state.ms.us

Phase I Early Restoration Plan



Mississippi Sound oyster growing areas in Hancock and Harrison counties.